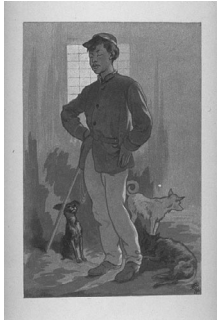


historiques, c'est la guerre civile qui est



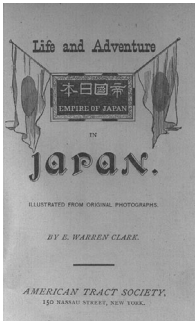
déroute et la princesse, sa future, éva-
va devenir la noie du vainqueur.

[重の井]



[警官と野良犬]

1878



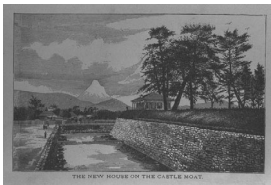
Life and adventure in Japan

Clark, E. W.

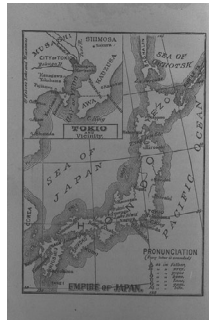
日本での生活と冒険

クラーク, E. W.

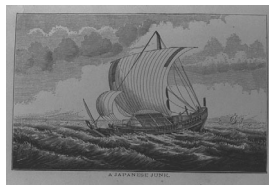
00005097



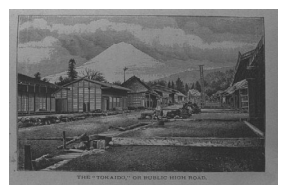
The new house on the castle
moat.
城の堀にある新しい家



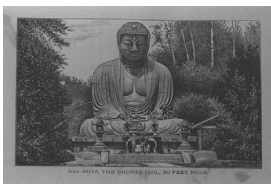
Empire of Japan.
日本帝国[地図]



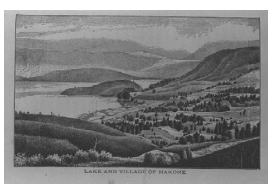
A Japanese junk.
日本のジャンク [帆掛舟]



The "Tokaido," or public high
road.
"東海道", すなわち本街道



Dai-Butsu, the bronze idol, 50 feet
high.
大仏, 青銅像, 高さ50フィート



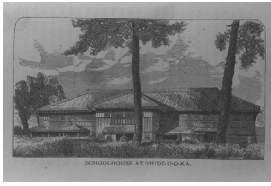
Lake and village of Hakone.
箱根の湖と村



Japanese hotel, in the Hakone
Mountains.
日本のホテル, 箱根山にて



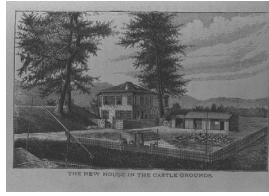
Temple gateway.
寺の出入口



Schoolhouse at Shidz-u-o-ka.
静岡の校舎



Buddhist temple and pagoda.
仏教の寺と塔



The new house in the castle grounds.
城の敷地の中の新しい家



Man pounding rice.
米を搗く男



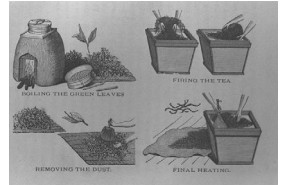
Japanese mode of sleeping.
日本人の眠り方



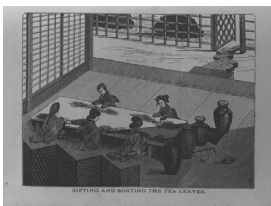
Fuji Yama.
富士山



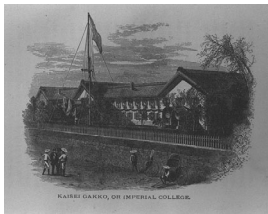
A tea plantation - Fuji-yama in the background.
茶園 - 遠景は富士山



Boiling the green leaves. Firing the tea. Removing the dust. Final heating.
緑の葉をゆでる。火で乾かす。ごみを除く。最後の加熱



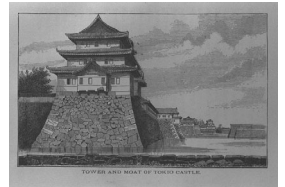
Sifting and sorting the tea leaves.
茶の葉の選別



Kaisei Gakko, or Imperial College.
開成学校、すなわち帝国大学



Kai-sei Gak-ko entrance.
開成学校の入口



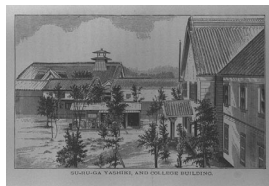
Tower and moat of Tokio Castle.
東京の城[江戸城]の櫓と堀



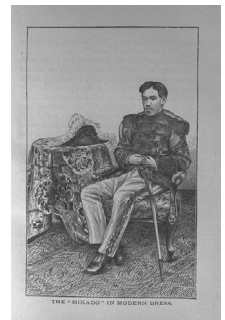
Tomb of the first Tycoon.
初代の大君[将軍]の墓



The home in Tokio.
東京の家



Su-ru-ga Yashiki, and college building.
駿河屋敷、そして大学の建物



The "Mikado" in modern dress.
当世風の服装をした"ミカド"



Empress in court costume.
宮廷服姿の皇后



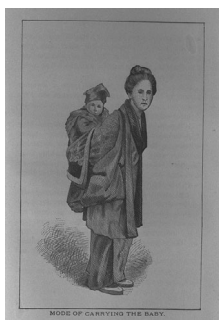
Representative classes of society.
社会の代表的な階層



Japanese gondola.
日本の Gondola [屋形船]



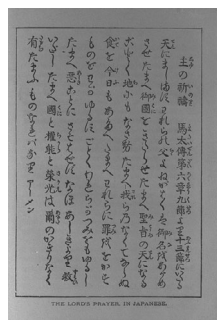
Riding in a "Kan-go."
"カンゴ" [駕籠] に乗る



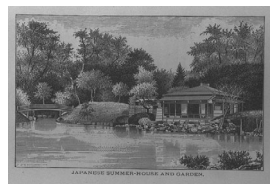
Mode of carrying the baby.
赤ん坊の運び方 [おんぶ]



American mission home.
アメリカ人の伝道所

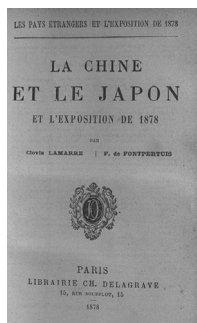


The Lord's Prayer, in Japanese.
日本語の主の祈り



Japanese summer-house and garden.
日本のあずまやと庭園

1878

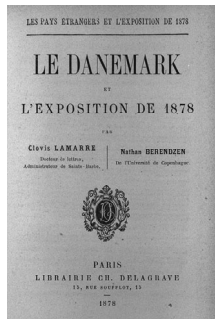


La Chine et le Japon et l'Exposition de 1878

Lamarre, Cl. Fontpertuis, Ad. F. de.

中国と日本と1878年の博覧会

ラマルル, Cl. フォンペルテユイ, Ad. F. de.



La Danemark et l'Exposition de 1878

Lamarre, Cl. Berendzen, N.

デンマークと1878年の博覧会

ラマルル, Cl. ベレンゼン, N.

00065699