

Keramic art of Japan; v. 1

Audley, G. A. Bowes, J. L.

日本の陶芸；第1巻

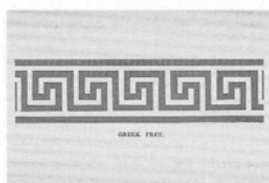
オーズリー, G. A. ボウズ, J. L.

00118127

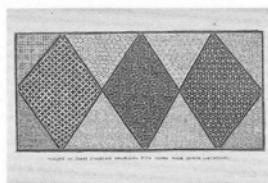


Plate A.

図版A [日本の組格子模様]



Greek fret.
組格子模様



Plaque of Imari porcelain
decorated with diaper work
(Bowes Collection.)
幾何学模様で装飾された伊万里
磁器の飾り板 (ボウズ収集品)

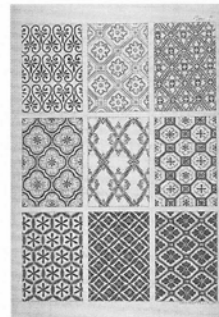
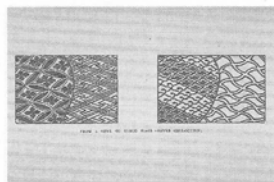
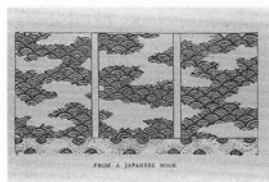


Plate B.

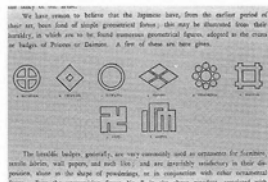
図版B [幾何学的な装飾模様]



From a bowl of Banco ware
(Bowes Collection).
万古焼の鉢より (ボウズ収集品)



From a Japanese book.
日本の本より



[大名の紋章]

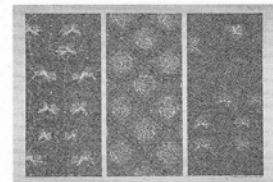
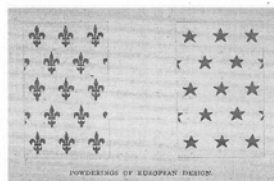


Plate C.
図版C [鹿革の装飾に使われた
模様]



Powderings of European
design.
ヨーロッパ風の散らし模様

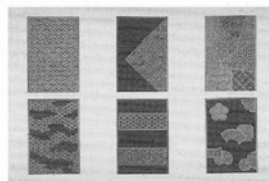


Plate D.
図版D [漆塗りの箱や飾り箆箭
の横に描かれた幾何学模様]

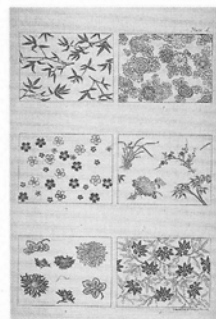


Plate E.
図版E [日本の壁紙(ふすま)の
散らし模様]

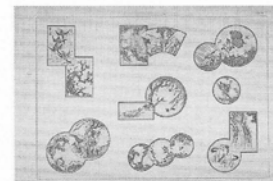


Plate F.
図版F [円型模様の結合と装飾
のいろいろな方法]

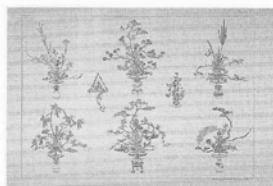
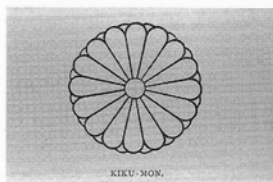
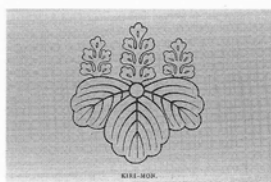


Plate G.
図版G[生け花の略図]



Kiku-mon.
菊紋



Kiri-mon.
桐紋

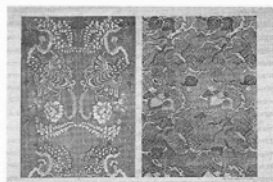


Plate H.
図版H[牡丹と藤の模様, 桐と鳳
凰の模様]

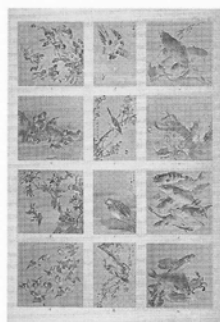
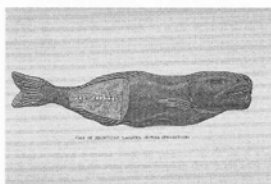


Plate K.
図版K[いろいろな鳥や魚の絵]



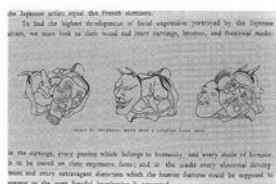
Plate L.
図版L[学校の教科書に出てく
る木版画の複写]



Fish in incrustated lacquer.
(Bowes Collection).
漆をかぶせた魚(ボウズ収集品)



Plate I.
図版I[空想上の動物]



Groups of theatrical masks
from a Japanese block book.
日本の木版本より劇の面の
グループ

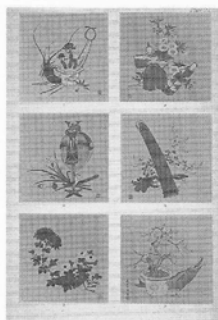
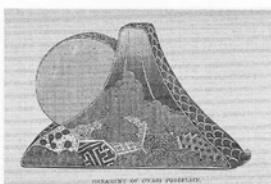
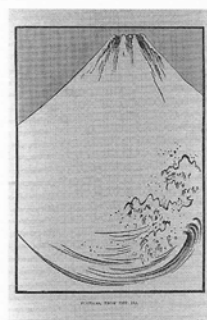


Plate M.
図版M[季節を表現した花の絵]



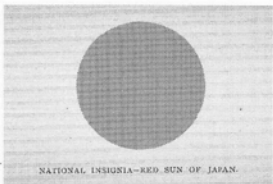
Ornament of Owari porcelain.
尾張磁器の飾り物



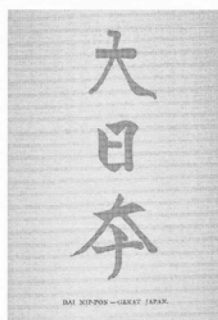
Fusiyama from the Sea.
海から見たフシヤマ[富士山]



Yebis. Bis-ja-mon. Tossi-Toku.
Daikoku. Ben zai-ten. Hotei.
Shiou-ro.
恵比須, 毘沙門, 歳徳, 大黒,
弁財天, 布袋, 寿老



National insignia - the Red Sun
of Japan.
国家のしるしー日本の赤い太陽



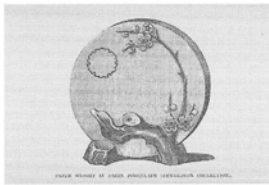
Dai Nip-pon - Great Japan.
大日本



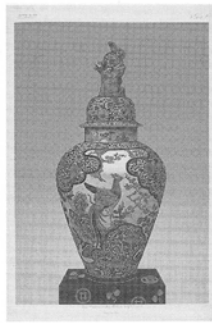
Crest of the Prince of Hizen.
肥前の君主の紋章



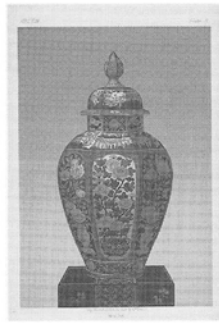
Paper weight in Hizen porcelain (Henderson Collection).
肥前磁器の文鎮(ヘンダーソン収集品)



Paper weight in Hizen porcelain (Henderson Collection).
肥前磁器の文鎮(ヘンダーソン収集品)



Hizen. Covered jar.
肥前. 蓋付きの壺



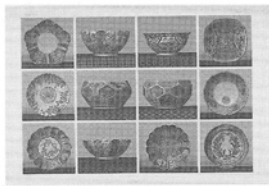
Hizen. Covered jar.
肥前. 蓋付きの壺



Hizen. Beaker. Gourd-shaped bottle.
肥前. 広口の大杯. 瓢箪型の瓶



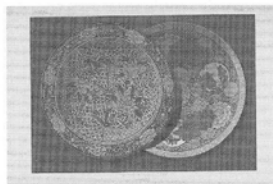
Hizen. Dish.
肥前. 大皿



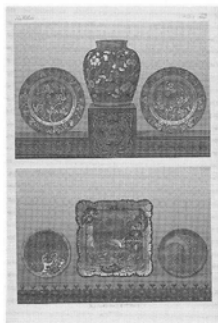
Hizen. Pair of basins. Basin. Shallow basins.
肥前. 対の鉢. 鉢. 浅い鉢



Hizen. Covered jar.
肥前. 蓋付きの壺



Hizen. Dish. Saucer dish.
肥前. 大皿. 台皿



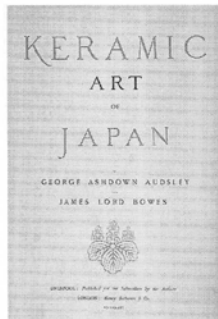
Hizen. Jar. Pair of plates. Square dish. Circular dishes.
肥前. 壺. 対の皿. 角皿. 丸皿



Hizen. Figure. Pair of jars. Pair of lamps.
肥前. 人物像. 対の壺. 対の灯籠



Celadon. Figure of a sennin. Vase. [etc.]
青磁. 仙人像. 花瓶[など]



Keramic art of Japan; v. 2

Audsley, G. A. Bowes, J. L.

日本の陶芸；第2巻

オーズリー, G. A. ボウズ, J. L.

1875

00118128