

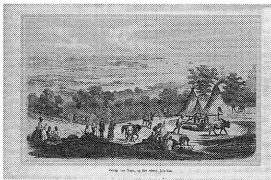
# Reis om de wereld naar Japan

Heine, W.

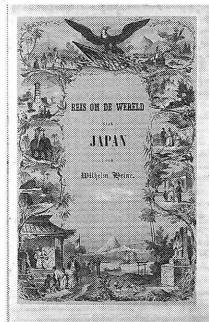
## 世界周航日本への旅 (蘭語版)

ハイネ, W.

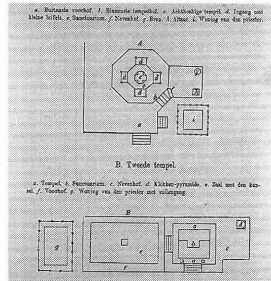
00006431



View of Napha (Naha), Liu-Kiu Island  
Gezigt van Napa, op het eiland Liu-Kiu  
琉球島の那覇の光景



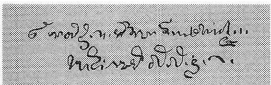
[Added title page]  
[副標題紙]



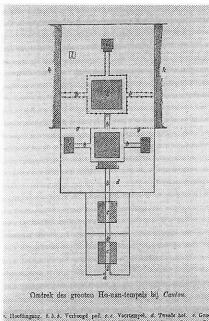
A. One temple B. The other temple  
A. Eerste tempel B. Tweede tempel  
A. 寺院(第1). B. 寺院(第2)



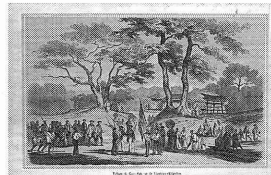
Fish market of Canton  
Vischmarkt te Canton  
広東の魚市場



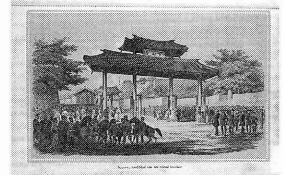
[文字]



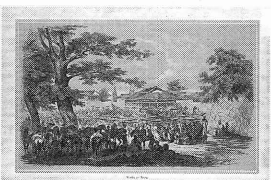
Ground of the Ho-nan-Temple near Canton  
Omtrek des grooten Ho-nan-tempels bij Canton  
広東の大寺院河南寺の境内



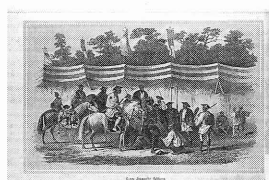
Tshan-di-Coo-Sah of the Lew Chew Island  
Tchan-di-Coo-Sah op de Lioekioe-Eilanden  
琉球島のチャン・ディ・コー・サー



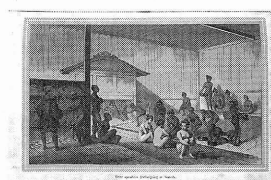
Shooy (Shuri?), capital of the Lew Chew Island  
Shooy, hoofdstad van het eiland Lioekioe  
琉球島の首都, 首里



Market place at Napha (Naha)  
Markt te Napa  
那覇の市場



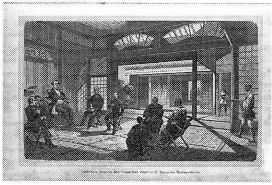
Japanese Soldiers  
Groep Japansche Soldaten  
日本の侍たち



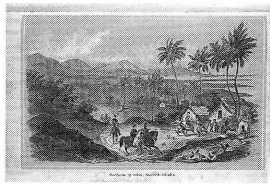
A public bath at Simoda  
Eene openbare Badinrigting te Simoda  
下田の公衆浴場



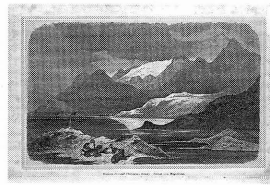
Visiting cards  
Visitekaartje  
日本の名刺



Conference of Commodore Perry and Japanese officials  
 Conferentie tusschen den Commodore Perry en de Japansche Commissarissen  
 ペリー提督と日本の役人との会見

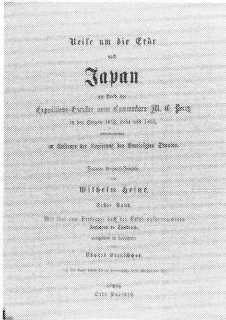


Honolulu of Oahu Island, Sandwich Islands (Hawaii Islands)  
 Honoloeloe op Oahoe, Sandwich-Eilanden  
 オアフ島のホノルル, サンドウィッチ諸島



Snowy-Sound, Magellan Streit  
 Snowy-Sound (Sneeuw-Sond), Straat van Magellaan  
 マゼラン海峡のスノーウィー・サウンド(雪の海峡)

1856



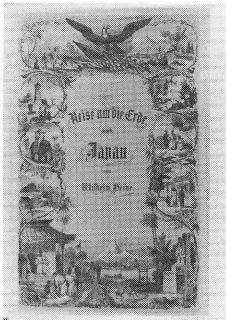
*Reise um die Erde nach Japan*

Heine, W.

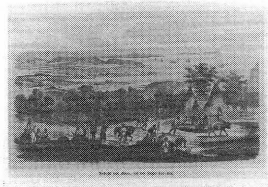
世界周航日本への旅 (独語版)

ハイネ, W.

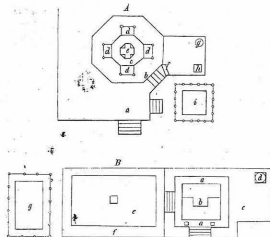
00027182



[Added title page]  
 [副標題紙]



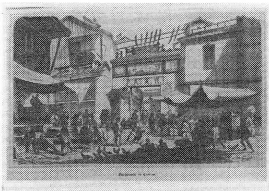
Ansicht von Napa, auf der Insel Liu=Kiu.  
 琉球島的那覇の光景



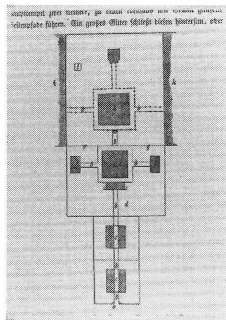
A. Erster Tempel.  
 B. Zweiter Tempel.  
 A. 寺院第1 B. 寺院第2

Handwritten text in a cursive script, likely a signature or note.

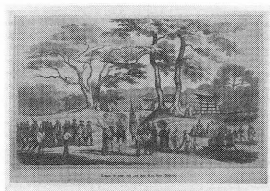
[文字]



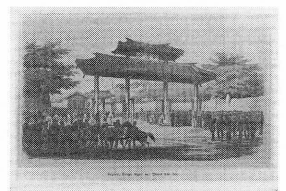
Fischmarkt in Canton.  
 広東の魚市場



Grundriss des grossen Ho=nan=Tempels bei Canton.  
 広東の大寺院河南寺の平面図



Tchan=di=coo=sah auf den Liu=Kiu=Inseln.  
 琉球島のチャン・デイ・コー・サー



Schooij, Haupt-Stadt der Insel Liu-Kiu.  
 琉球島の首都, 首里