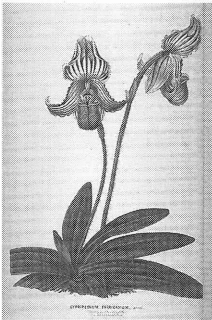


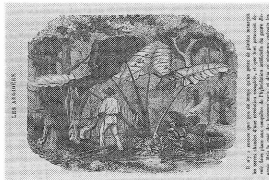
*Annales d'horticulture et de botanique ou flore des jardins du royaume des Pays-Bas; v. 5*

園芸学・植物学年報，オランダ王国庭園植物誌；第5巻

00145091



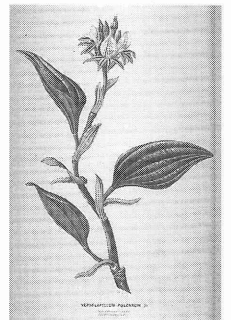
Cyripedium Fairieanum Lindl.  
[ランのアツモリソウ属の一種]



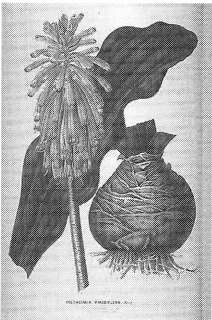
[サトイモ科の植物]



[サトイモ科の植物]



Nephelapyllum pulchrum Bl.  
[ランのネフェラフィルム属の一種]



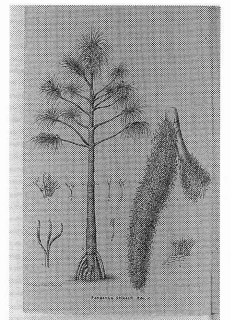
Veltheimia viridiflora Jacq.  
[フェルトヘイミア属の一種]



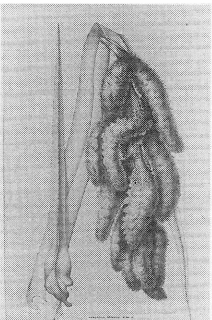
Lycaste Skinneri Ldl. et Var.  
[ランのリカステ属の一種]



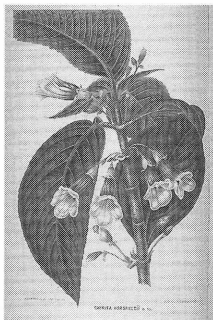
Cyanthea arborea a Martinique.  
[ヘゴ属の一種，木生のシダ]



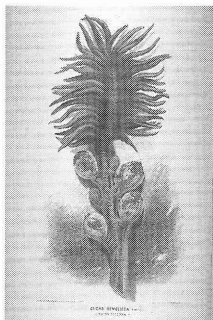
Pandanus spiralis R. Br.  
[タコノキ属の一種]



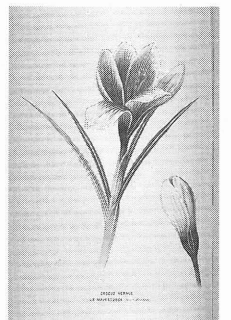
Pandanus spiralis R. Br.  
[タコノキ属の一種]



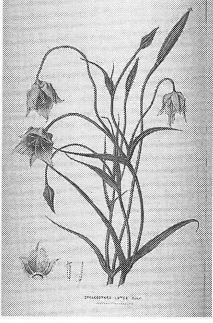
Chirita Horsfieldii R. Br.  
[キリタ属の一種]



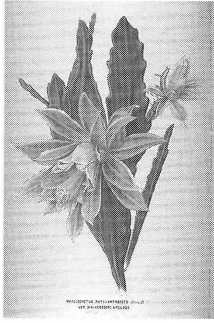
Cycas revoluta Lour. (Facies externa) Cycas inermis Lour.  
ソテツ(外側の姿)



Crocus vernus hybr. le majestueux. Hort. Harlem.  
[サフラン属の一種]

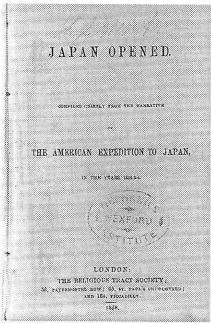


Cyclobotria lutea Lindl.  
キクロボトラ・ルテア, リンド  
リー[カコロツス属の一種]



Phyllocactus phyllanthoides  
Salm-D. var Molkenboeri  
Krelage.  
[サボテンの一種]

1858



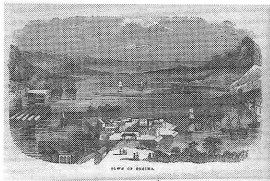
*Japan opened*  
The Religious Tract Society

日本開国  
宗教冊子協会

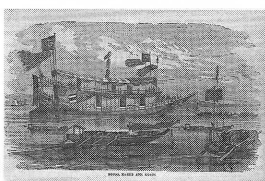
00087905



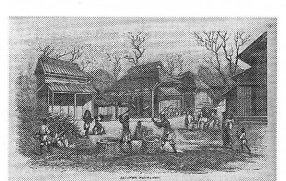
Delivery of the president's  
letter.  
大統領親書の手交



Town of Desima.  
出島の町



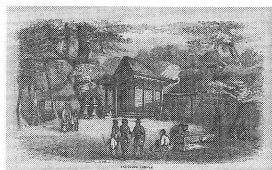
Royal barge and boats.  
皇室[将軍家]御座船と舟



Japanese farmyard.  
日本の農家の庭先



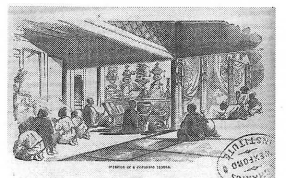
Buddhist priest, in full dress.  
正装した仏僧



Japanese temple.  
日本の寺社



Japanese woman and child.  
日本の女と子ども



Interior of a Japanese temple.  
日本の寺院の内部