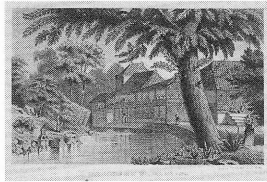


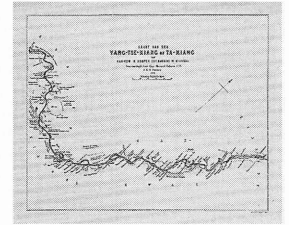
Gezigt op den Fusi-Yama, naar eene Japansche teekening.  
富士山の眺め、日本の絵より



Thee-tuinen in de nabijheid van Yedo.  
江戸近郊の茶屋の庭園

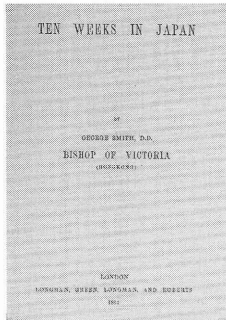


Japansche begrafenis.  
日本の葬列



Kaart van den Yang-tse-Kiang of Ta-kiang van Han-kow in Hoopeh tot Nanking in Kiangsu.  
揚子江すなわち大江の地図、湖北省漢口から江蘇省南京まで

1861



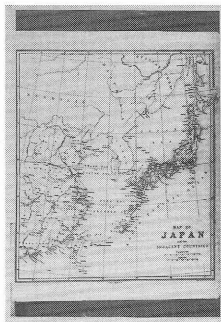
*Ten weeks in Japan*  
Smith, G.

日本での10週間  
スミス, G.

00013914



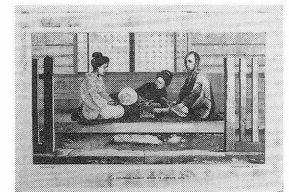
The Japanese ambassadors at Washington  
ワシントンの日本人大使



Map of Japan  
日本地図



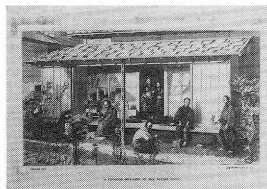
A Japanese official gentleman  
日本の役人



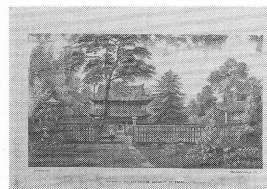
A Japanese family scene in common life  
日常生活における日本人家族の光景



Japanese ladies  
日本人女性たち



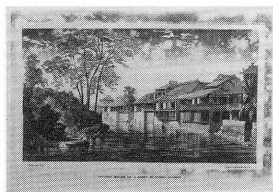
A Japanese dwelling of the better class  
上流階級の日本人住居



Approach to the British legation at Yedo  
江戸のイギリス公使館の入口

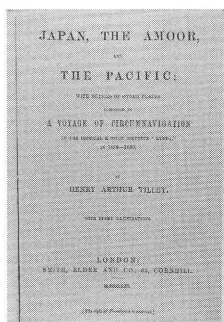


A Loochooan priest and gentleman  
琉球人僧侶と紳士



Japanese houses on a creek in  
Yeddo Harbour  
江戸湾の入り江にある日本人の家

1861

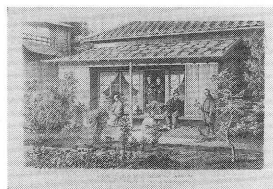


*Japan, the Amoor, and the Pacific*

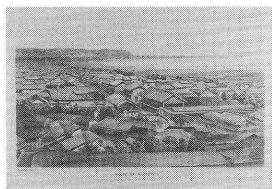
Tilley, H.A.

日本，アムール，太平洋  
ティリー，H.A.

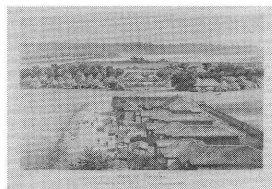
00019524



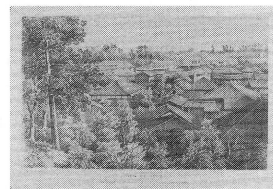
House at Yedo, with group of  
Japanese  
江戸の家、日本人のグループと  
ともに



View of Kanagawa  
神奈川の光景



View of Yakuama  
横浜の光景



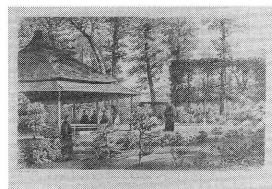
View of Yedo  
江戸の光景



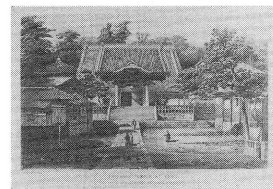
Cemetery of the Nobles &  
Princes at Yedo  
江戸の貴族と君主の墓地



Emperor's Sporting Quarters,  
at Odji  
天皇[将軍]の御狩場，王子



Public Gardens at Odji  
王子の公園



Emperor's Temple at Yedo  
江戸の天皇の寺