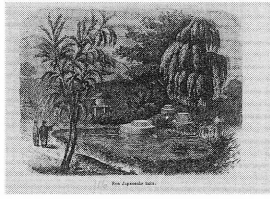


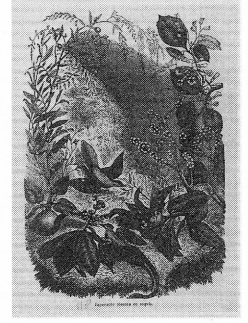
De kamferboom.
クスノキ



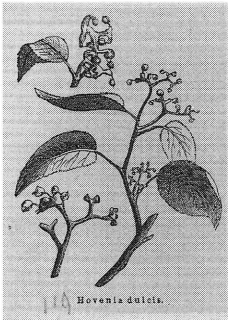
Een Japansche tuin.
日本の庭園



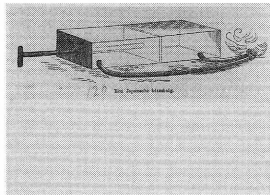
Hangende brug van Ruwo bij
Simoda.
下田近くの竜王の吊り橋



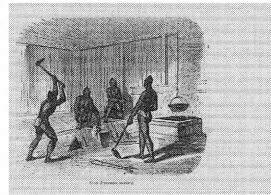
Japansche planten en vogels.
日本の植物と鳥



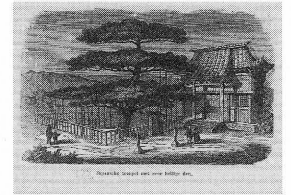
Hovenia dulcis.
ケンボナシ



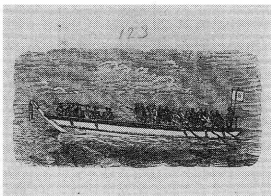
Een Japansche blaasbalg.
日本のフイゴ



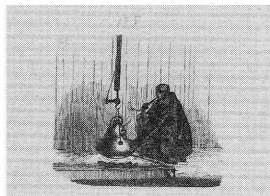
Eene Japansche smederij.
日本の鍛冶屋



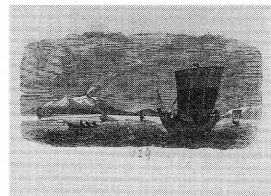
Japansche tempel met eene
heilige den.
聖なる松の植わっている日本の
寺



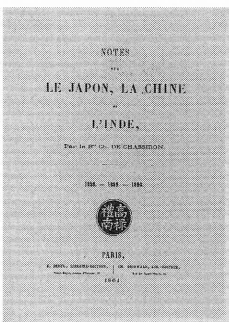
[艀漕ぎ船]



[いろりの横で煙管を吸う人物]



[帆船の浮かぶ海岸]

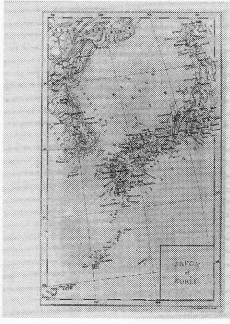


Notes sur le Japon, la Chine et l'Inde
Chassiron, Ch. G. M.

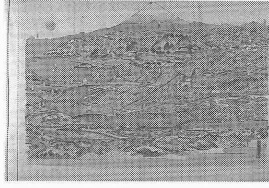
日本、中国、インドに関する覚書
シャシロン, Ch. G. M.

1861

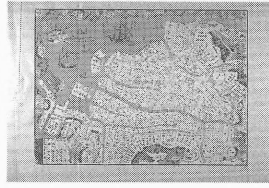
00015324



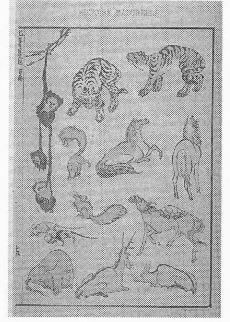
Japon et Korea.
日本と朝鮮[地図]



Plan Japonais de la Ville de
Yeddo.
日本の江戸市街地図



Plan Japonais de la Ville de
Nagha-saki.
長崎・出島周辺市街図



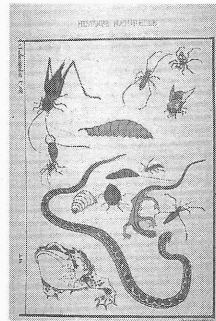
Histoire naturelle.
自然の話[北斎漫画, 動物]



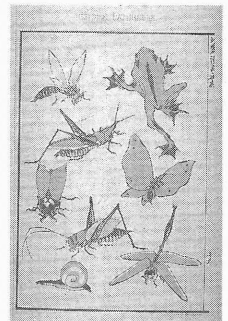
Histoire naturelle.
自然の話[北斎漫画, 鳥類の絵]



Histoire naturelle.
自然の話[北斎漫画, 鳥類の絵]



Histoire naturelle.
自然の話[北斎漫画, 昆虫類, 爬虫類, 両生類]



Histoire naturelle.
自然の話[北斎漫画, 昆虫類, 両生類]



Histoire naturelle.
自然の話[北斎漫画, 魚類]



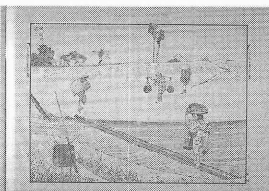
Histoire naturelle.
自然の話[北斎漫画, 植物]



Histoire naturelle.
自然の話[北斎漫画, 植物]



Travaux de la Campagne.
田舎の労働[富嶽百景, 遠江山中の不二]



Moeurs de la Campagne.
田舎の風俗[富嶽百景, 堤越の不二]



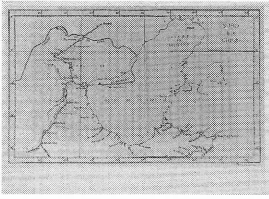
Caricatures
漫画[北斎漫画]



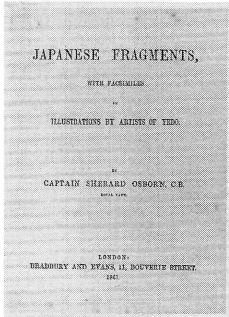
Caricatures
漫画



Caricatures
漫画[盲人の川越]



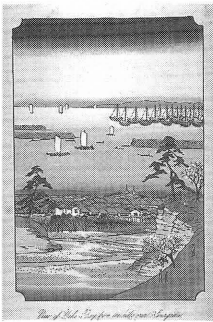
Nord de la Chine.
中国北部[地図]



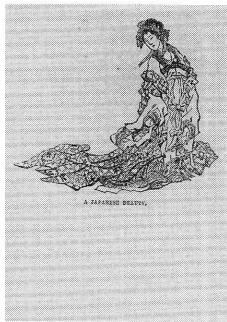
*Japanese fragments, with facsimiles of illustrations
by artists of Yedo*
Osborn, Sh.

日本断片録，江戸の画家の挿絵の模写を使って
オズボーン，Sh.

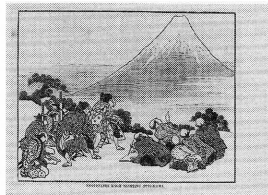
00013552



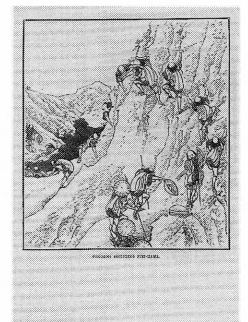
View of Yedo Bay from the hills over Kanagawa.
神奈川の丘から江戸湾の眺め



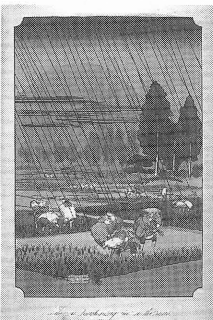
A Japanese Beauty.
日本の美人



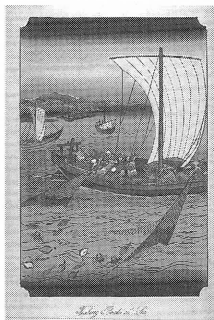
Travellers first sighting Fusi-Hama.
旅行者が最初に目にする富士山



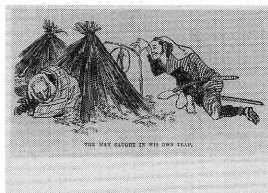
Pilgrims ascending Fusi-Hama.
巡礼者の富士登山



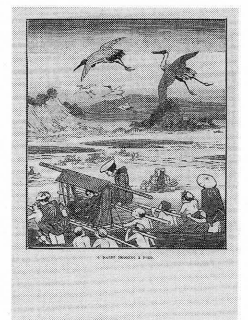
Labourers transplanting rice in the rains.
雨の中稲の植えつけ[田植え]をする労働者



Fishing Boats at Sea.
海の漁船



The man caught in his own trap.
彼自身の罠にかかった人



A party crossing a ford.
浅瀬を渡る一行