

漆 器

Lacquerware



894 桐紋散牡丹唐草蒔絵唐櫃
江戸十九世紀
高 56.0 幅 81.6 奥行 51.6

Rectangular chest with scattered paulownia crests, peonies, and karakusa
Gold and silver makie
Edo, ca. 19th century



895 文人道具青貝散提筆箱
江戸十九世紀
高 18.7 幅 16.4 奥行 29.5

Portable chest for writing utensils
Lacquer with abalone inlay
Edo, ca. 19th century 3324



896 山水蒔絵香篋箱
明治十九世紀
高 6.0 幅 5.3 奥行 8.3

Incense chest with landscape scenes
Gold and silver makie
Meiji, ca. 19th century

1360



897 蝶牡丹蒔絵香篋箱
明治十九世紀
高 5.8 幅 5.1 奥行 7.5

Incense chest with design of butterflies and peonies
Gold makie
Meiji, ca. 19th century

3632



898 楼閣山水螺鈿篋箱
明治十九世紀
高 29.9 幅 31.4 奥行 30.2

Chest with landscape scenes
Lacquer with mother-of-pearl inlay
Meiji, ca. 19th century

3452



899 三保の松原図蒔絵香篋箱
「保井抱中作」
明治十九世紀
高 10.7 幅 8.2 奥行 11.7

Incense chest with design of Miho no Matsubara
Gold and silver makie
Signed "Yasui Hōchū"
Meiji, ca. 19th century

3183



900 太田道灌図螺鈿蒔絵
提筆筒
「政由」
明治後期
高 20.4 幅 15.4 奥行 21.3

Chest (design of Ōta
Dōkan)
Gold makie with mother-of-
pearl inlay
Signed "Masayoshi"
Meiji, ca. 19th-20th cen. 2048



901 文人道具嵌装茶箱
「笠翁」、「観」
江戸十九世紀
高 13.1 幅 19.6 奥行 12.8

Tea utensil box (design
of writing utensils)
Gold and silver makie with
shell inlay
Signed "Ritsuō"
Edo, ca. 19th century 3611



902 八橋蒔絵茶箱
江戸十九世紀
高 11.5 幅 16.5 奥行 10.4

Tea utensil box with
design of Yatsuhashi
Gold makie
Edo, ca. 19th century

2457



903 宝尽螺鈿茶箱
明治十九世紀
高 13.0 幅 16.8 奥行 11.3

Tea utensil box with
design of assorted
precious objects
Red lacquer with mother-of-
pearl inlay
Meiji, ca. 19th century 387



904 蜻蛉嵌装茶箱
明治十九世紀
高 11.0 幅 15.2 奥行 10.5

Tea utensil box with
design of dragonflies
Meiji, ca. 19th century

436



905 鐔文人道具嵌装茶箱
明治十九世紀
高 11.4 幅 17.2 奥行 9.0

Tea utensil box with
design of sword guards
and writing utensils
Gold makie
Meiji, ca. 19th century

50.284



906 蝶牡丹螺鈿茶箱
明治後期
高 13.2 幅 19.6 奥行 14.3

**Tea utensil box with
design of butterflies
and peonies**
Lacquer with mother-of-
pearl inlay
Meiji, ca. 19th-20th cen. 1563



907 九曜紋舞樂蒔繪手箱
江戸十九世紀
高 25.0 幅 38.5 奥行 28.0

**Box for personal
accessories with design
of crests**
Gold and silver makie
Edo, ca. 19th century

5555



908 上り藤加字紋散
鉄線唐草蒔繪十二手箱
江戸十八世紀
高 22.4 幅 33.1 奥行 27.2

**12-tiered box with design
of scattered lupin crests
and karakusa**
Edo, ca. 18th century

2002



909 武具散蒔繪手箱
「一得齋橘玉春造」
明治大正時代
高 12.9 幅 21.0 奥行 26.6

**Box (design of warrior
utensils)**
Gold and silver makie
Signed "Ittokusai Tachibana
Gyokushun"
Meiji-Taishō, ca. 20th cen.

3208



910 重色紙蒔繪重箱
江戸十九世紀
高 17.0 幅 18.2 奥行 16.6

**Stacked box with design
of layered poem cards**
Gold and silver makie
Edo, ca. 19th century

3350



911 桐鳳凰螺鈿重箱
明治大正
高 19.6 幅 25.0 奥行 23.2

**Box with design of
phoenixes and
paulownia trees**
Lacquer with mother-of-
pearl inlay
Meiji-Taishō, ca. 20th cen.

3633



912 若松唐草葵紋散蒔繪
長文箱
江戸十九世紀
高 10.2 幅 46.0 奥行 12.5

Letter box with design of
pines, karakusa, and
hollyhock crests
Gold and silver makie
Edo, ca. 19th century

5412



913 山水人物蒔繪文箱
幕末明治
高 8.1 幅 27.6 奥行 10.6

Letter box with scene of
figures in a landscape
Gold makie
ca. 19th century

340



914 鉈豆蒔繪螺鈿籐製文庫
幕末明治
高 5.7 幅 16.8 奥行 21.3

Rattan document box with
design of sword beans
Makie with mother-of-pearl
inlay
ca. 19th century

2455



915 桜蒔繪文箱
明治大正時代
高 13.0 幅 27.0 奥行 9.9

Letter box with design of
cherry blossoms
Gold and silver makie
Meiji-Taishō, ca. 20th cen.

38



916 菊枝蒔繪色紙箱
江戸十九世紀
高 5.5 幅 23.0 奥行 25.8

Box for shikishi poem
cards with design of
chrysanthemum branch
Gold makie
Edo, ca. 19th century

2273



917 八橋蒔繪箱
幕末明治
高 3.9 幅 6.0 奥行 20.4

Box with design of
Yatsunashi
Gold and silver makie
ca. 19th century

3465



918 向蝶蒔絵焚殻入
幕末明治
高 7.6 幅 6.5 奥行 6.5

**Takigara ire with design
of paired butterflies**
Gold makie
ca. 19th century

1588



919 鐔文人道具嵌装箱
明治大正時代
高 10.1 幅 14.6 奥行 12.2

**Box with design of sword
guards and writing
utensils**

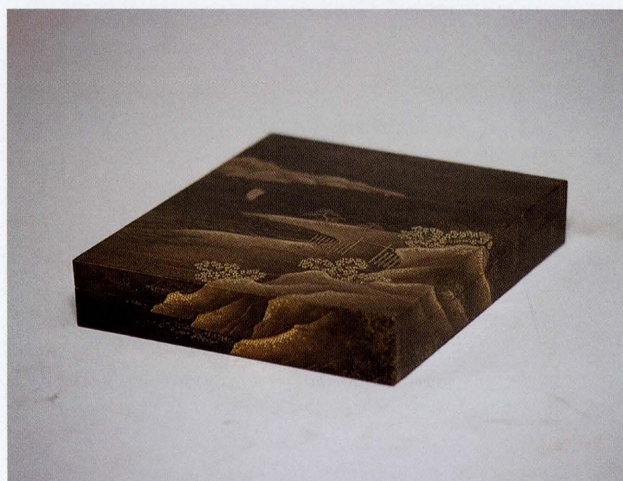
Lacquer with shell inlay
Meiji-Taishō, ca. 20th cen.
2835



920 獅子蒔絵青貝散硯箱
幕末明治
高 3.5 幅 17.4 奥行 23.0

**Writing box with design
of lions**
Gold and silver makie with
abalone inlay
ca. 19th century

2274



921 須磨浦蒔絵小硯箱
明治十九世紀
高 3.1 幅 15.5 奥行 18.1

**Small writing box with
scene of Suma Bay**

Gold makie
Meiji, ca. 19th century

1990



922 冊子散蒔絵小硯箱
明治十九世紀
高 2.8 幅 14.0 奥行 17.7

**Small writing box with
design of scattered book
pages and autumn
grasses**
Gold and silver makie
Meiji, ca. 19th century

3451



923 孔雀牡丹蒔絵硯箱
明治十九世紀
高 13.8 幅 13.6 奥行 25.8

**Writing box with design
of peacocks and peonies**
Gold and silver makie
Meiji, ca. 19th century

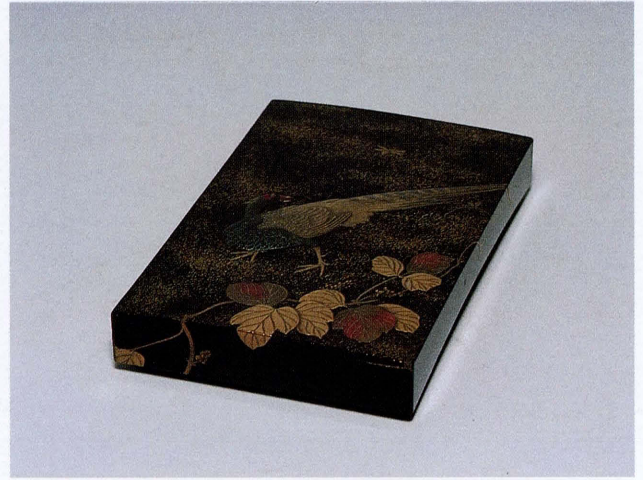
3464



924 雉蒔絵小硯箱
明治十九世紀
高 3.8 幅 17.4 奥行 18.6

Small writing box with
design of pheasant
Gold and silver makie
Meiji, ca. 19th century

1745



925 雉葛蒔絵硯箱
明治十九世紀
高 4.3 幅 15.0 奥行 22.6

Writing box with design
of pheasant and ivy
Gold and silver makie
Meiji, ca. 19th century

1186



926 鳥兜形花唐草蒔絵漆硯
明治十九世紀
高 1.8 幅 13.0 奥行 10.0

Ink box in the shape of a
helmet with design of
floral karakusa
Gold makie
Meiji, ca. 19th century

3370



927 七宝二剣花菱紋散撫子
唐草蒔絵香具箱
江戸十九世紀
高 15.5 幅 14.8 奥行 12.7

Box for incense utensils
with crests, pinks, and
karakusa
Gold and silver makie
Edo, ca. 19th century

2454



928 団扇散蒔絵香箱
幕末明治
高 4.0 幅 6.0 奥行 10.4

Incense box with design of
scattered uchiwa fans
Gold makie
ca. 19th century

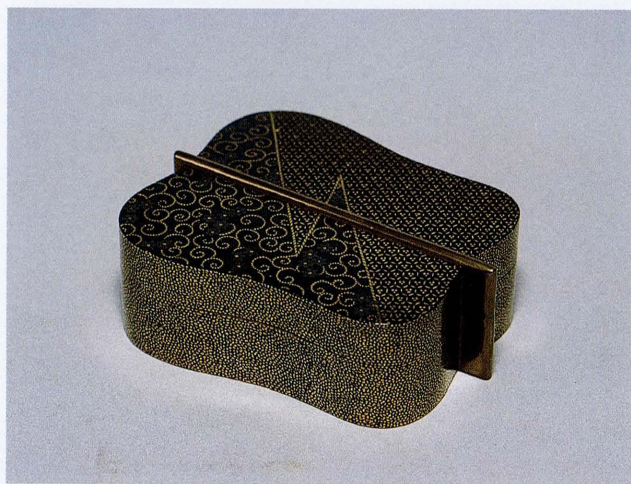
2080



929 重団扇形御所車蒔絵香箱
明治十九世紀
高 4.9 幅 12.7 奥行 8.4

Incense box in the shape
of layered fans
Gold and silver makie
Meiji, ca. 19th century

3311



930 軍配形青貝散香箱
明治十九世紀
高 3.6 幅 8.3 奥行 10.2

**Incense box in the shape
of a sumō referee's fan**
Lacquer with abalone inlay
Meiji, ca. 19th century

3227



931 桜に楓花弁門紋散蒔絵
重香箱
明治十九世紀
高 10.2 幅 7.8 奥行 10.8

**Stacked incense box with
design of maple leaves
and floral crests**
Gold and silver makie
Meiji, ca. 19th century

3886



932 重色紙形孔雀蒔絵香箱
明治十九世紀
高 7.0 幅 12.2 奥行 15.2

**Incense box in the shape
of layered poem cards
with design of peacocks**
Gold and silver makie
Meiji, ca. 19th century

3186



933 扇散蒔絵香箱
「佐藤製造」
明治十九世紀
高 5.5 幅 12.7 奥行 10.0

**Incense box with design of
scattered fans**
Gold and silver makie
Signed "Satō"
Meiji, ca. 19th century

1900



934 竹林七賢図蒔絵香箱
明治十九世紀
高 6.2 幅 13.4 奥行 10.5

**Incense box with scene of
seven sages of the
bamboo grove**
Gold and silver makie
Meiji, ca. 19th century

3206



935 歌留多遊蒔絵香箱
明治十九世紀
高 5.8 幅 10.6 奥行 13.6

**Incense box with scene of
figures playing cards**
Gold and silver makie
Meiji, ca. 19th century

3345



936 武具散蒔絵香箱
明治十九世紀
高 3.9 幅 11.0 奥行 7.9

Incense box with design of arms and armor
Gold and silver makie
Meiji, ca. 19th century

1102



937 花筏蒔絵重香箱
明治十九世紀
高 7.0 幅 12.0 奥行 9.0

Tiered incense box with design of flowers on floating rafts
Gold and silver makie
Meiji, ca. 19th century

2551



938 蓮鴨蒔絵香箱
明治十九世紀
高 4.8 幅 11.5 奥行 8.3

Incense box with design of lotuses and ducks
Gold and silver makie
Meiji, ca. 19th century

1840



939 重蛤形紅葉賀蒔絵香箱
明治十九世紀
高 5.2 幅 12.4 奥行 10.1

Clam-shaped incense box with design of Momiji no Ga
Gold makie
Meiji, ca. 19th century

2535



940 屏風形日光宝蔵図蒔絵香箱
「得好齋」
明治十九世紀
高 4.9 幅 22.2 奥行 18.0

Incense box in the shape of a folding-screen with Nikkō Treasure House
Gold and silver makie
Signed "Tōkkōsai"
Meiji, ca. 19th century

3264



941 団扇形蛇捕鳥図蒔絵香箱
明治十九世紀
高 4.0 幅 11.4 奥行 7.0

Fan-shaped incense box with design of snake catching a bird
Gold and silver makie
Meiji, ca. 19th century

3159



942 翁面形蒔絵香箱
明治十九世紀
高 4.2 幅 15.0 奥行 6.3

**Incense box in the shape
of a mask**
Gold and silver makie
Meiji, ca. 19th century

947



943 軍配形桐鳳凰蒔絵香箱
明治十九世紀
高 5.7 幅 12.4 奥行 15.7

**Incense box in the shape
of a sumō referee's fan**
Gold makie
Meiji, ca. 19th century

3133



944 茅屋形蒔絵香箱
明治十九世紀
高 8.7 幅 8.3 奥行 6.8

**Incense box in the shape
of a thatched hut**
Gold and silver makie
Meiji, ca. 19th century

688



945 蝶蒔絵香箱
明治十九世紀
高 3.1 幅 9.0 奥行 8.7

**Incense box with design of
butterflies**
Gold and silver makie
Meiji, ca. 19th century

875



946 反物形蒔絵香箱
明治十九世紀
高 4.4 幅 10.5 奥行 5.3

**Incense box in the shape
of rolls of kimono cloth**
Gold and silver makie
Meiji, ca. 19th century

3381



947 色紙散蒔絵香箱
明治十九世紀
高 4.2 幅 7.8 奥行 9.7

**Incense box with design of
scattered poem cards**
Gold and silver makie
Meiji, ca. 19th century

2229



948 山水田圃蒔絵香箱
明治十九世紀
高 6.0 幅 10.4 奥行 9.1

**Incense box with
landscape scene and
rice fields**
Gold and silver makie
Meiji, ca. 19th century

2279



949 扇面形亀螺鈿香箱
明治十九世紀
高 7.5 幅 14.6 奥行 12.4

**Incense box in the shape
of a folding fan with
design of turtles**
Mother-of-pearl inlay
Meiji, ca. 19th century

6130



950 野馬螺鈿蒔絵香箱
「佐貫田」
明治大正時代
高 4.0 幅 8.8 奥行 8.4

**Incense box with scene of
horses in a field**
Gold makie with mother-of-
pearl inlay
Signed "Sanukida"
Meiji-Taishō period

3365



951 結文形貝藻蒔絵香合
江戸十九世紀
高 1.9 幅 8.2 奥行 4.8

**Knot-shaped incense
container with design
of seaweed**
Gold makie
Edo, ca. 19th century

1748



952 初音蒔絵香合
明治十九世紀
高 2.1 幅 7.6 奥行 9.0

**Incense container with
Hatsune scene from
Tale of Genji**
Gold makie
Meiji, ca. 19th century

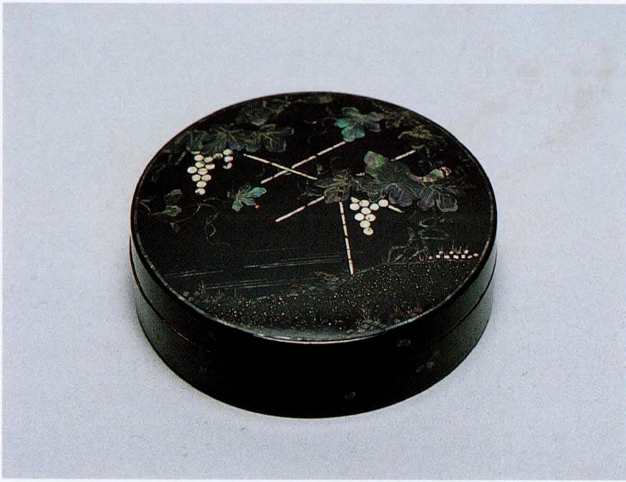
3241



953 重色紙形若松御所車
蒔絵香合
明治十九世紀
高 1.8 幅 7.1 奥行 8.4

**Incense container in the
shape of layered poem
cards**
Meiji, ca. 19th century

2277



954 葡萄棚螺鈿香合
明治十九世紀
高 2.4 徑 8.2

**Incense container with
design of grape vines on
a trellis**
Lacquer with mother-of-
pearl inlay
Meiji, ca. 19th century 3213



955 蜘蛛巢雷神蒔繪香合
明治十九世紀
高 2.4 徑 7.7

**Incense container with
design of Raijin caught
in a spiderweb**
Gold makie
Meiji, ca. 19th century 2082



956 鶉籠形蒔繪香合
明治十九世紀
高 6.3 徑 7.2

**Incense container in the
shape of a quail cage**
Gold and silver makie
Meiji, ca. 19th century 2430



957 桜花蒔繪重香合
明治十九世紀
高 8.7 幅 6.7 奥行 6.7

**Tiered incense container
with design of cherry
blossoms**
Makie
Meiji, ca. 19th century 1749



958 杉鳥蒔繪香合
明治大正時代
高 2.1 徑 8.6

**Incense container with
design of crow and
cedar**
Gold makie
Meiji-Taishō, ca. 20th cen.
50.675.1



959 八重葎蒔繪螺鈿阿古陀
香炉
明治十九世紀
高 8.0 徑 9.3

**Incense burner in the
shape of an akoda
melon with design of
catchweed**
Gold makie with mother-of-
pearl inlay
Edo, ca. 19th century 48



960 瓜形橘桜蒔絵蓋物
明治十九世紀
高 11.5 幅 20.0 奥行 12.0

**Melon-shaped covered
container with
tachibana and cherry
blossom design**
Gold and silver makie
Meiji, ca. 19th century 63.11



961 揚羽蝶紋散松牡丹蒔絵
鏡箱
江戸十九世紀
高 6.1 径 14.0

**Mirror box with scattered
swallowtail crests, pine,
and peonies**
Gold makie
Edo, ca. 19th century

1422



962 向鶴紋唐草蒔絵柄鏡箱
「榎嶋和泉守久共」
江戸十九世紀
高 1.5 奥行 13.5 径 8.6

**Mirror box with cranes
crest and karakusa**
Gold makie
Signed "Makishima Izumi no
Kami Hisatomon"
Edo, ca. 19th century 6133



963 向鶴紋唐草蒔絵鏡建
及び柄鏡箱
江戸十九世紀
高 22.1/2.0 幅 15.2 奥行 16.6/15.3
径/10.3

Mirror stand and box
Gold and silver makie
Edo, ca. 19th century

1532



964 楼閣山水蒔絵花見弁当
江戸十九世紀
高 29.8 幅 29.6 奥行 15.1

**Picnic box with
landscape scene**
Gold and silver makie
Edo, ca. 19th century

1389



965 松鶴蒔絵花見弁当
江戸十九世紀
高 31.8 幅 33.9 奥行 22.0

**Picnic box with design of
cranes and pines**
Gold and silver makie
Edo, ca. 19th century

51.795



966 舟形蒔絵花見弁当
幕末明治
高 30.2 幅 61.0 奥行 22.2

**Picnic box in the shape of
a boat**
Gold and silver makie
ca. 19th century

3372



967 揚羽蝶菊水紋散唐草
蒔絵提子
江戸十九世紀
高 15.2 幅 22.6 奥行 15.2

**Sake pitcher with design
of scattered, crests
and karakusa**
Gold makie
Edo, ca. 19th century

2492



968 海賦据文蒔絵煙管入
明治十九世紀
高 25.8 幅 3.7

**Pipe container with poem
about the sea**
Silver makie
Meiji, ca. 19th century

2482



969 鷹鶴蒔絵平棗
明治十九世紀
高 5.5 径 8.4

**Hira natsume tea caddy
with design of hawk
and crane**
Gold and silver makie
Meiji, ca. 19th century

1773



970 朱漆経机
江戸十九世紀
高 13.4 幅 23.8 奥行 18.4

Desk for sutra reading
Red lacquer
Edo, ca. 19th century

293



971 浜松鶴蒔絵文台
江戸十八~十九世紀
高 11.0 幅 56.5 奥行 32.8

**Writing table with scene
of Hamamatsu and
cranes**
Gold and silver makie
Edo, ca. 18th-19th century

7741



972 楼閣山水螺鈿花台
幕末明治
高 19.3 幅 49.5 奥行 33.8

**Flower stand with
landscape scene**
Lacquer with mother-of-
pearl inlay
ca. 19th century

544



973 桐唐草蒔絵懸盤
(附水次・汁碗)
江戸十九世紀
高 20.6/16/19.8 幅 29.4
径 15.7/12.1

**Tray table with design of
paulownia and karakusa
(with pitcher and bowl)**
Gold and silver makie
Edo, ca. 19th century

78/5411/5413



974 菊水蒔絵盃
江戸十九世紀
高 2.7 径 10.0

**Sake cup with design of
chrysanthemums and
flowing water**
Gold makie
Edo, ca. 19th century

1882



975 菊慈童蒔絵盃
幕末明治
高 4.4 径 12.9

**Sake cup with design of
Kikujidō**
Gold makie
ca. 19th century

3134



976 鼈甲製扇散蒔絵盃
明治十九世紀
高 3.8 径 12.0

**Sake cup with design of
scattered folding fans**
Gold makie on tortoise shell
Meiji, ca. 19th century

3499



977 海藻図皿
「乾也」
江戸十九世紀
高 2.6 径 18.0

**Plate with design of
seaweed**
Lacquer on wood
Signed "Ken'ya"
Edo, ca. 19th century

1174



978 松竹梅鶴龜時繪懸盤
江戸十九世紀
高 19.3 幅 31.3 奥行 30.2

Tray table with design of pine, bamboo, plum, crane, and tortoise
Gold and silver makie
Edo, ca. 19th century

2243



979 桃形猿時繪煙草盆
江戸十九世紀
高 19.6 幅 32.2 奥行 17.2

Tobacco tray in the shape of peaches with design of monkeys
Gold and silver makie
Edo, ca. 19th century

2456



980 三十六歌仙図沈金足付膳
明治十九世紀
高 3.0 幅 25.6 奥行 18.0

Legged tray with design of 36 immortal poets
Lacquer with sunken gold
Meiji, ca. 19th century

50.542



981 花卉門紋時繪鬚台形煙草盆
明治十九世紀
高 14.9 幅 21.4 奥行 12.8

Tobacco tray in the shape of a bindai with design of floral crests
Gold makie
Meiji, ca. 19th century

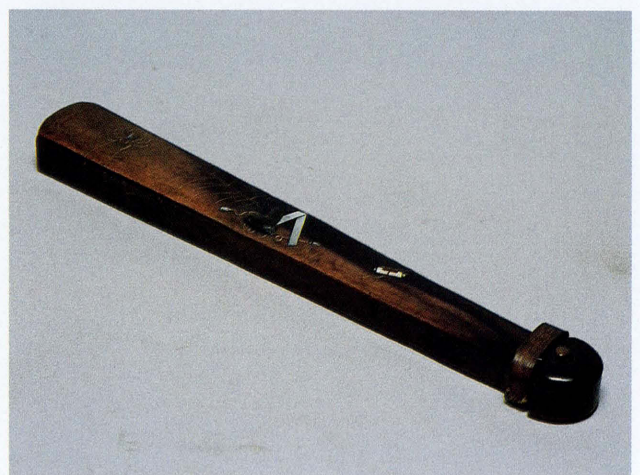
1441



982 花文螺鈿盆
明治十九世紀
高 2.9 径 18.2

Tray with decorated with flower motifs
Lacquer with mother-of-pearl inlay
Meiji, ca. 19th century

2298



983 蜘蛛巢冠時繪矢立
「豊臣虎真筆」
幕末明治
高 2.2 幅長 26.4

Portable writing box with design of spider web
Gold makie
Signed "Toyotomi Toramasa"
ca. 19th century

5521



984 富士見西行蒔絵煙草入
明治十九世紀
高 6.2 幅 8.6

**Tobacco container with
scene of Saigyō
viewing Mt. Fuji**
Gold and silver makie
Meiji, ca. 19th century

5405



985 虫尽竹彫煙草入
「樂之堂磨錢」
明治十九世紀
高 8.6 幅 9.9

**Tobacco container with
design of insects**
Bamboo
Signed "Rakushidō"
Meiji, ca. 19th century

32



986 牡丹唐草蒔絵女乗物
江戸十九世紀
高 29.8 幅 33.4 奥行 24.8

**Woman's palanquin with
design of peonies and
karakusa**
Gold makie
Edo, ca. 19th century

2780



987 烏瓜蒔絵櫛
「抱一筆」「羊遊齋」
江戸十九世紀
高 4.7 幅 12.8

**Comb with design of snake
gourds**
Gold and silver makie
Signed "Hōitsu" and
"Yōyūsai"
Edo, ca. 19th century

3285



988 南天蒔絵櫛
「麦川齋」
江戸十九世紀
高 4.0 幅 11.8

**Comb with design of
nanten**
Gold makie
Signed "Bakusensai"
Edo, ca. 19th century

3458



989 秋蒔絵櫛
「羊遊齋」
江戸十九世紀
高 3.7 幅 9.5

**Comb with design of bush
clover**
Gold and silver makie
Signed "Yōyūsai"
Edo, ca. 19th century

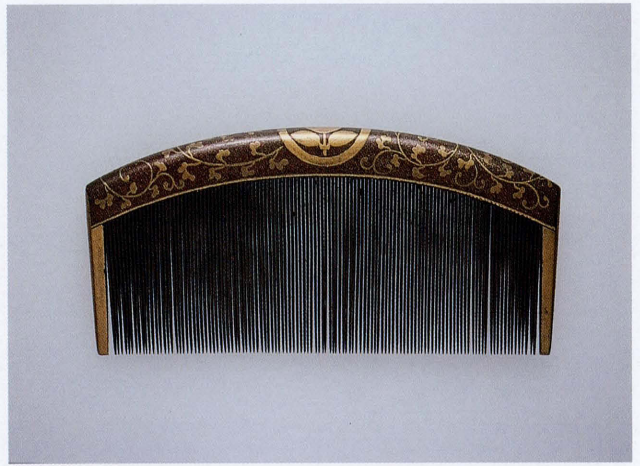
3554



990 橘紋唐草蒔絵解櫛
江戸十九世紀
高 4.8 幅 9.9

Comb with design of
tachibana crest and
karakusa
Gold makie
Edo, ca. 19th century

3599



991 橘紋唐草蒔絵梳櫛
江戸十九世紀
高 4.8 幅 10.0

Comb with design of
tachibana crest and
karakusa
Gold makie
Edo, ca. 19th century

3332



992 桐紋散蒔絵櫛
「羊遊齋」
江戸十九世紀
高 3.9 幅 10.4

Comb with design of
paulownia crests
Gold makie
Signed "Yōyūsai"
Edo, ca. 19th century

3490



993 雀形蒔絵櫛
幕末明治
高 2.9 幅 8.6

Comb in the shape of a
sparrow
Gold and silver makie
ca. 19th century

3513



994 文尽蒔絵櫛
「龍玉齋」
明治十九世紀
高 3.9 幅 9.0

Comb with design of
crests
Gold makie
Signed "Ryūgyokusai"
Meiji, ca. 19th century

3284



995 立雛囿蒔絵櫛
「松月」
明治十九世紀
高 3.3 幅 10.3

Comb with design of dolls
Gold and silver makie
Signed "Shōgetsu"
Meiji, ca. 19th century

4117



996 文尽蒔絵櫛
明治十九世紀
高 4.4 幅 9.5

Comb with design of
assorted crests
Gold and silver makie
Meiji, ca. 19th century

3551



997 文尽蒔絵櫛
明治十九世紀
高 4.5 幅 10.3

Comb with design of
assorted crests
Gold and silver makie
Meiji, ca. 19th century

3328



998 秋草蒔絵印籠
江戸十九世紀
高 4.7 幅 6.1

Inrō with design of
autumn grasses
Gold and silver makie
Edo, ca. 19th century

3273



999 鶉籠鞘形蒔絵印籠
江戸十九世紀
高 6.2 幅 4.6

Sheath-shaped inrō with
design of quails in a
cage
Gold makie
Edo, ca. 19th century

2529



1000 菝葜茨蒔絵印籠
幕末明治
高 4.2 幅 7.5

Inrō with design of
smilax
Gold makie
ca. 19th century

2247



1001 夕顔蒔絵印籠
「抱一筆」
幕末明治
高 5.2 幅 5.4

Inrō with design of
calabash
Signed "Hōitsu"
ca. 19th century

3282



1002 橋上往来図時絵印籠
「茂永」
明治十九世紀
高 5.4 幅 7.8

**Inrō with scene of
figures crossing
a bridge**
Gold and silver makie
Signed "Shigenaga"
Meiji, ca. 19th cen. 69.100



左 1003 桐製追儺図印籠
「観」
江戸十九世紀
高 6.9 幅 5.5

**Inrō with scene of
exorcising demons**
Paulownia wood
Signed "Kan"
Edo, ca. 19th century

2584



右 1004 勇駒図時絵印籠
江戸十九世紀
高 6.2 幅 5.1

Inrō with design of horse
Gold and silver makie
Edo, ca. 19th century

251



左 1005 稲穂に雀時絵螺鈿
印籠
江戸十九世紀
高 6.5 幅 4.9

**Inrō with design of
sparrows and rice husks**
Gold makie with mother-of-
pearl inlay
Meiji, ca. 19th century

2499



右 1006 鮫皮貼小道具時絵
印籠
江戸十九世紀
高 7.6 幅 6.6

**Inrō with design of
utensils**
Gold and silver makie and
sharkskin
Edo, ca. 19th century

3253



左 1007 夕顔蒔絵印籠
江戸十九世紀
高 8.2 幅 5.4

**Inrō with design of
calabash**

Gold makie
Edo, ca. 19th century

54.300



右 1008 御所車秋草蒔絵印籠
「関尚孝」
江戸十九世紀
高 7.8 幅 5.9

**Inrō with design of
carriage and autumn
grasses**

Gold and silver makie
Signed "Seki Naotaka"
Edo, ca. 19th century

3198



左 1009 雲龍青貝印籠
江戸十九世紀
高 9.8 幅 4.8

**Inrō with design of
dragon in clouds**

Lacquer with abalone inlay
Edo, ca. 19th century

3333

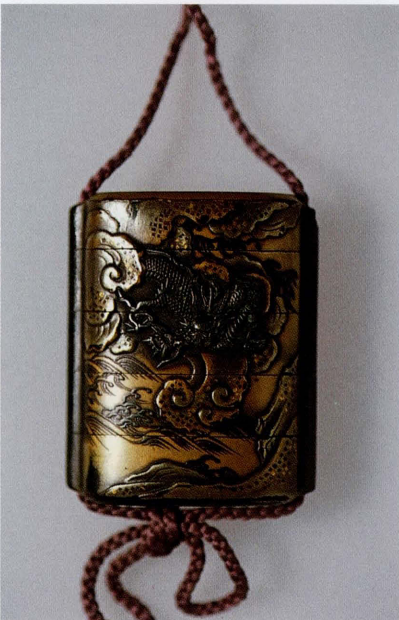


右 1010 四藤紋蒔絵印籠
江戸十九世紀
高 6.3 幅 6.0

Inrō with wisteria crest

Gold and silver makie
Edo, ca. 19th century

2823



左 1011 雲龍据文蒔絵印籠
江戸十九世紀
高 7.7 幅 5.3

**Inrō with design of
dragon in clouds**

Gold makie
Edo, ca. 19th century

69.99



右 1012 茅屋架菊蒔絵印籠
江戸十九世紀
高 7.2 径 3.2

**Inrō with design of
thatched cottage and
chrysanthemums**

Gold and silver makie
Edo, ca. 19th century

904



左 1013 菊蒔絵漆絵印籠
江戸十九世紀
高 8.2 幅 5.2

**Inrō with design of
chrysanthemums**
Gold makie
Edo, ca. 19th century

1919



右 1014 芦鷺嵌装印籠
「乾也」
江戸十九世紀
高 8.1 幅 4.5

**Inrō with design of
heron and reeds**
Ceramic inlay
Signed "Ken'ya"
Edo, ca. 19th century

3147



左 1015 亀木彫印籠
幕末明治
高 8.0 幅 5.7

Inrō with design of turtle
Wood
ca. 19th century 53.381.1/2/3



右 1016 小紋青貝印籠
「梶川作」
幕末明治
高 6.8 幅 6.2

**Inrō with design of small
crests**
Makie with abalone inlay
Signed "Kajikawa"
ca. 19th century

172



左 1017 関羽張飛蒔絵印籠
幕末明治
高 8.8 幅 4.8

**Inrō with design of
Kan'u and Chōhi**
Gold and silver makie
ca. 19th century

1406



右 1018 松鶴蒔絵印籠
幕末明治
高 6.2 幅 5.8

**Inrō with design of crane
and pine**
Gold and silver makie
ca. 19th century

1177



左 1019 若松梅桜蒔絵印籠
幕末明治
高 8.8 幅 4.8

**Inrō with design of
young pines, plum and
cherry blossoms**
Gold and silver makie
ca. 19th century

87.29



右 1020 雀捕蒔絵印籠
幕末明治
高 6.0 幅 4.9

**Inrō with scene of
sparrow trap**
Gold and silver makie
ca. 19th century

1433



左 1021 梅樹梟蒔絵印籠
幕末明治
高 6.0 径 2.6

**Inrō with design of owl
and plum**
Gold and silver makie
ca. 19th century

3893



右 1022 餅搗耕作図蒔絵印籠
「梶川作」
幕末明治
高 8.2 幅 5.2

**Inrō with scenes of
making mochi and
farming**
Gold and silver makie
Signed "Kajikawa"
ca. 19th century

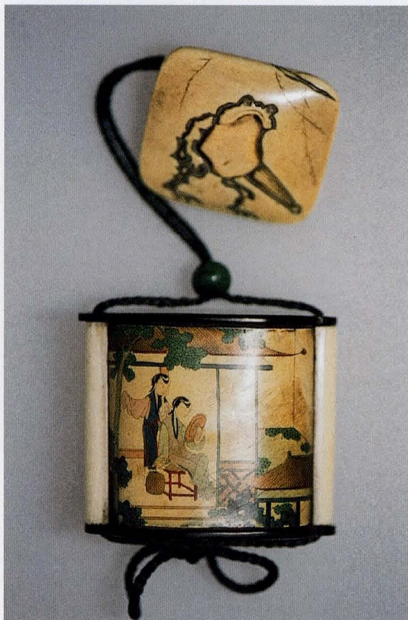
1766



左 1023 太公望蒔絵印籠
幕末明治
高 7.6 幅 5.4

**Inrō with design of
Taikōbō**
Gold and silver makie
ca. 19th century

1378



右 1024 牙製彩色支那春情図
印籠
明治十九世紀
高 5.2 幅 5.4

**Inrō with Chinese erotic
pictures**
Ivory with paint
Meiji, ca. 19th century

50.328



左 1025 鏡形竜虎文印籠
「観松斎桃葉」
明治十九世紀
高 6.5 幅 6.4

**Mirror-shaped inrō with
dragon and tiger design**
Signed "Kanshōsai Tōyō"
Meiji, ca. 19th century 53.361



右 1026 唐人図玳瑁貼印籠
明治十九世紀
高 6.3 幅 5.9

**Inrō with scene of
Chinese figures**
Gold makie on tortoise shell
Meiji, ca. 19th century 1767



左 1027 狐嫁入り図蒔絵印籠
「古満巨柳作」
明治十九世紀
高 9.3 幅 5.2

**Inrō with scene of fox
wedding**
Gold and silver makie
Signed "Koma Koryū"
Meiji, ca. 19th century 53.362



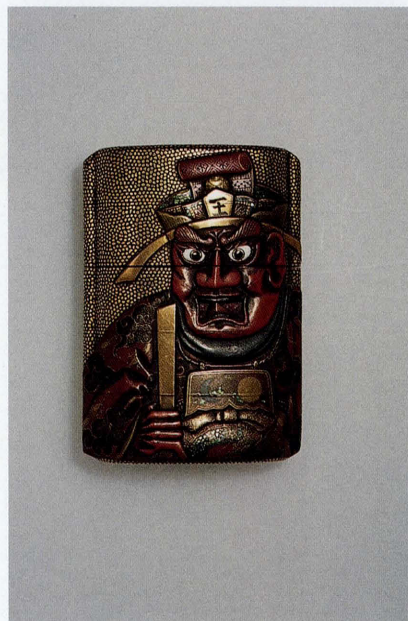
右 1028 波に月蒔絵印籠
明治十九世紀
高 6.7 幅 4.0

**Inrō with design of moon
over the waves**
Gold makie
Meiji, ca. 19th century 69.71



左 1029 乗合船蒔絵印籠
「古満休伯」
明治十九世紀
高 8.0 幅 5.5

**Inrō with design of
ferryboat**
Gold and silver makie
Signed "Koma Kyūhaku"
Meiji, ca. 19th century 50.313



右 1030 閻魔蒔絵印籠
明治十九世紀
高 8.5 幅 5.8

**Inrō with design of
Enma**
Gold and silver makie
Meiji, ca. 19th century 3578



左 1031 小紋青貝印籠
明治十九世紀
高 6.8 幅 5.4

Inrō with design of small crests

Lacquer with abalone inlay
Meiji, ca. 19th century 1716



右 1032 海老土筆蒔絵印籠
「古満巨柳」
明治十九世紀
高 7.0 幅 7.0

Inrō with design of shrimp and horsetail

Silver and gold makie
Signed "Koma Koryū"
Meiji, ca. 19th century 3678



左 1033 安芸宮島図蒔絵印籠
明治十九世紀
高 10.0 幅 4.7

Inrō with scene of Miyajima

Gold and silver makie
Meiji, ca. 19th century 3677



右 1034 面尽蒔絵印籠
「是常庵鳳船」
明治十九世紀
高 8.4 幅 5.4

Inrō with design of assorted masks

Gold and silver makie
Signed "Zeijōan Hōsen"
Meiji, ca. 19th century 1187



左 1035 龍涛蒔絵印籠
「古熊羊月」
明治十九世紀
高 7.5 幅 6.6

Inrō with design of dragon and waves

Gold and silver makie
Signed "Koyū Yōgetsu"
Meiji, ca. 19th century 69.96



右 1036 牙彫鞘形印籠
明治十九世紀
高 6.5 幅 4.4

Inrō in the shape of a scabbard

Ivory
ca. 19th century 50.329



左 1037 瓢箪駒蒔絵印籠
明治十九世紀
高 16.6 幅 5.6

**Inrō with design of horse
emerging from gourd**

Gold makie
Meiji, ca. 19th century

2786



右 1038 竹青貝印籠
明治十九世紀
高 7.8 幅 5.3

**Inrō with design of
bamboo**

Lacquer with abalone inlay
Meiji, ca. 19th century

50.326



左 1039 青海波花文蒔絵印籠
明治十九世紀
高 5.0 幅 5.2

**Inrō with design of
waves and flower motifs**

Gold and silver makie
Meiji, ca. 19th century

3251



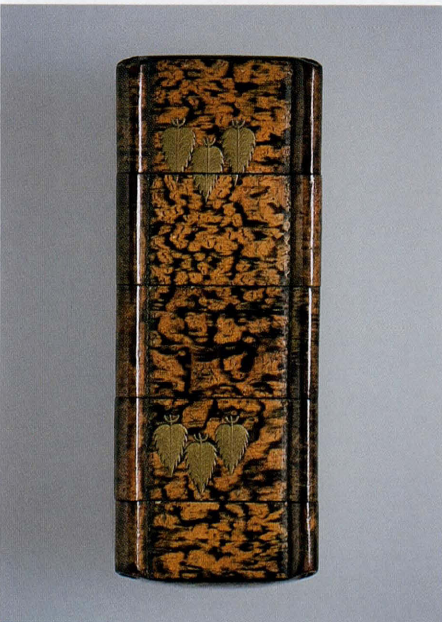
右 1040 鴨鷺蒔絵印籠
「常嘉」
明治十九世紀
高 2.2 径 8.3

**Inrō with design of duck
and heron**

Gold and silver makie
Signed "Jōka[sai]"

Meiji, ca. 19th century

3150



左 1041 森紋蒔絵印籠
「東明齋」
明治十九世紀
高 9.3 幅 3.1

Inrō with Mori crests

Gold makie
Signed "Tōmeisai"

Meiji, ca. 19th century

2583



右 1042 山水蒔絵印籠
明治十九世紀
高 7.0 幅 4.6

**Inrō with landscape
scenes**

Gold makie
Meiji, ca. 19th century

4194



左 1043 富士時絵印籠
明治大正時代
高 8.9 幅 4.5

Inrō with design of Mt. Fuji

Gold and silver makie
Meiji-Taishō, ca. 20th century

2560



右 1044 葵紋九曜星散牡丹
唐草時絵行器
江戸十九世紀
高 20.0 径 17.6

Box with design of hollyhock crests, kuyosei, peonies, and karakusa

Gold makie
Edo, ca. 19th century

3371



左 1045 露草時絵螺鈿中次
明治十九世紀
高 6.6 径 6.6

Tea caddy with design of dayflowers

Gold makie with mother-of-pearl inlay
Meiji, ca. 19th century

3331



右 1046 海老栄螺鏝上棗
明治十九世紀
高 7.5 径 6.6

Natsume tea caddy with design of shrimp and turbo

Sabiage
Meiji, ca. 19th century

50.294



左 1047 鎧袖形煙草入並びに
刀鞘形煙管入
明治十九世紀
高 10.2/22.0 幅 7.9 径/3.8

Armor-shaped tobacco container and scabbard-shaped pipe holder

Meiji, ca. 19th century

3831



右 1048 紅葉賀時絵筥
明治十九世紀
高 49.8 径 6.8

Shō with design of maple leaves

Gold makie
Meiji, ca. 19th century

50.349